

## HAMPSHIRE COUNTY COUNCIL

### Report

<b>Committee</b>	River Hamble Harbour Management Committee
<b>Date:</b>	9 March 2018
<b>Title:</b>	River Hamble Asset Register
<b>Report From:</b>	Director of Culture, Communities and Business Services

**Contact name:** Jason Scott

**Tel:** 01489 576387      **Email:** Jason.Scott@hants.gov.uk

#### 1. Recommendation

- 1.1. It is recommended that the River Hamble Harbour Management Committee agrees to recommend to the Board that this report be taken into account alongside the annual statutory accounts in setting Harbour Dues for 2018/19 at the June Board meeting.

#### 2. Summary

- 2.1. This report is rendered for the second time and shows the level of forecast expenditure likely to be required to maintain certain items of infrastructure critical to the delivery of RHHA operational capability. Alongside the statutory accounts, it will be used to judge the setting of Harbour Dues for 2018/19.

#### 3. Background

- 3.1. The report highlights the need for good husbandry, in particular, of our jetties over the course of the next fifteen years to smooth the requirement for their replacement between 2030 and 2040. These most expensive items to replace are in sound condition now. They will, alongside our other infrastructure, be subject to 5 yearly surveys going forward as recommended by our professional engineering survey contractors, Opus Engineering during last year's inspection.

Annex A to  
RHHA Asset Register Report

**River Hamble Fixed Assets Register**

Asset	Year of purchase	Purchase cost £	Life expectancy (years)	Replacement Due	Depreciation charge for 2017/18 £	Cumulative depreciation to 31/3/18 £	Net book value at 31/3/18 £	Annual Maintenance budget £	Replacement Cost £
<b>Marks, beacons, lights, piles &amp; buoys</b>									
Cardinal mark at river entrance – piling only	2000	3,000	30	2030	100	1,800	1,200	As req'd	3,500
Superstructure and cardinal top mark	2000	1,000	20	2020	0	1,000	0	A/R	1,500
9 beacons at river entrance, plastic piling	2000	30,000	30	2030	600	10,800	19,200	A/R	34,500
Sector lights – Hamble Point / Warsash superstructure	1997	30,000	30	2027	0	30,000	0	A/R	40,000
2 sector lights	2006	12,000	15	2021	800	9,600	2,400	A/R	15,000
5 port & starboard navigation marks / piles	1977	20,000	45	2022	0	20,000	0	A/R	25,000
Maintenance piles – Warsash	2002	33,000	30	2032	1,320	21,120	11,880	A/R	35,000
Maintenance piles – Hamble	1989	15,000	30	2019	0	15,000	0	A/R	16,000
Maintenance piles – Lands End	1988	15,000	30	2018	0	15,000	0	A/R	16,000
5 navigation buoys	2006	16,000	20	2026	800	9,600	6,400	A/R	18,000
Navigation lights at harbour entrance	2015	5,068	10	2025	507	2,028	3,040	A/R	5,500
<b>Total</b>		<b>180,068</b>			<b>4,127</b>	<b>135,948</b>	<b>44,120</b>		<b>210,000</b>

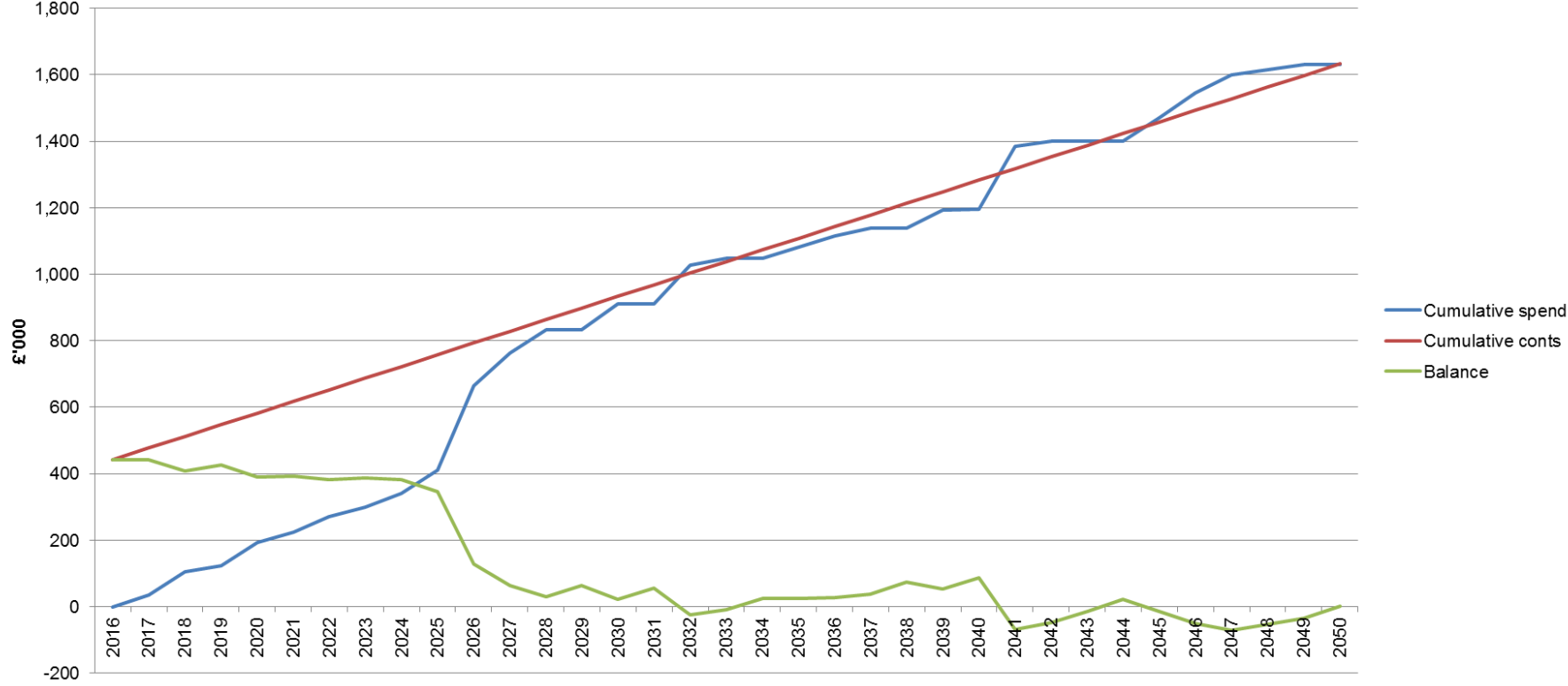
<b>Asset</b>	<b>Year of purchase</b>	<b>Purchase cost £</b>	<b>Life expectancy (years)</b>	<b>Replacement Due</b>	<b>Depreciation charge for 2017/18 £</b>	<b>Cumulative depreciation to 31/3/18 £</b>	<b>Net book value at 31/3/18 £</b>	<b>Annual Maintenance budget £</b>	<b>Replacement Cost £</b>
<b>Bridges, walkways, jetties</b>									
Bridge to Hamble jetty	1988	40,000	40	2028	1,333	40,000	0	2,000	50,000
Bridge to Warsash jetty	1990	40,000	40	2030	1,333	34,666	5,333	3,000 <sup>1</sup>	50,000
Walkway to Warsash jetty	1982	50,000	50	2032	1,000	36,000	14,000	Note 1	50,000
10 support piles for Warsash walkway	1982	36,000	50	2032	720	24,480	11,520	Note 1	30,000
Warsash jetty – piling, pontoons, services, lighting etc	2006	170,000	35	2041	6,800	67,000	103,000	Note 1	190,000
Warsash connecting pontoon	2016	55,000	35	2051	1,570	1963	53,037	1,000	55,000
Hamble jetty – piling, pontoons, services, lighting etc	1991	140,000	35	2026	0	140,000	0	2,000	160,000
Fisherman's pontoon / jetty	2006	48,000	20	2026	2,400	28,800	19,200	1,000	55,000
Visitors' pontoon and piles	2000	60,000	25	2025	2,400	40,800	19,200	2,000	65,000
River Hamble Country Park Jetty	2014	Est 55,000	25	2039	1,000	4,000	51,000	1,000	55,000
<b>Total</b>		<b>694,000</b>			<b>18,556</b>	<b>417,709</b>	<b>276,290</b>		<b>760,000</b>
<b>Boats</b>									
2 patrol boats	2011	40,000	12	2023	3,333	23,333	16,666	2,000	30,000
RIB	2012	15,000	15	2027	1,000	6,000	9,000	500	15,000
Engines <sup>2</sup>	2015/6/7	45,000	2.5	2017/8/9	10,830	25,994	19,006	Contract <sup>3</sup>	45,000
<b>Total</b>		<b>105,000</b>			<b>15,163</b>	<b>55,327</b>	<b>44,672</b>		<b>90,000</b>
<b>Maintenance Dredging (Not included in asset calc)</b>	2006	20,000	10	A/R	N/A	N/A	N/A	A/R	25,000
<b>Total</b>		<b>20,000</b>							<b>25,000</b>
<b>Grand Total</b>		<b>999,068</b>			<b>37,846</b>	<b>608,984</b>	<b>365,082</b>	<b>14,500</b>	<b>1,085m</b>

<sup>1</sup> For total Warsash jetties and piles.

<sup>2</sup> Staggered purchases for 5 engines in 3 boats. Trade in value for each engine of around £2500 against new purchase at 2.5 year intervals.

<sup>3</sup> Within engine contract.

### River Hamble - Asset Replacement Reserve



**CORPORATE OR LEGAL INFORMATION:  
Links to the Corporate Strategy**

<b>Hampshire safer and more secure for all:</b>	Yes/no
Corporate Improvement plan link number (if appropriate):	
<b>Maximising well-being:</b>	Yes/no
Corporate Improvement plan link number (if appropriate):	
<b>Enhancing our quality of place:</b>	Yes/no
Corporate Improvement plan link number (if appropriate):	

**Section 100 D - Local Government Act 1972 - background documents**

**The following documents discuss facts or matters on which this report, or an important part of it, is based and have been relied upon to a material extent in the preparation of this report. (NB: the list excludes published works and any documents which disclose exempt or confidential information as defined in the Act.)**

Document

Location

None

## **IMPACT ASSESSMENTS:**

### **1. Equality Duty**

1.1. The County Council has a duty under Section 149 of the Equality Act 2010 ('the Act') to have due regard in the exercise of its functions to the need to:

- Eliminate discrimination, harassment and victimisation and any other conduct prohibited under the Act;
- Advance equality of opportunity between persons who share a relevant protected characteristic (age, disability, gender reassignment, pregnancy and maternity, race, religion or belief, gender and sexual orientation) and those who do not share it;
- Foster good relations between persons who share a relevant protected characteristic and persons who do not share it.

**Due regard in this context involves having due regard in particular to:**

- a) The need to remove or minimise disadvantages suffered by persons sharing a relevant characteristic connected to that characteristic;
- b) Take steps to meet the needs of persons sharing a relevant protected characteristic different from the needs of persons who do not share it;
- c) Encourage persons sharing a relevant protected characteristic to participate in public life or in any other activity which participation by such persons is disproportionately low.

### **1.2. Equalities Impact Assessment:**

A full Equalities Impact Assessment for the River Hamble Harbour Authority's compliance with the Port Marine Safety Code (including environmental responsibilities) has been carried out. This report includes an Equalities Impact Assessment within the draft Strategic Plan.

### **2. Impact on Crime and Disorder:**

2.1. This report does not deal directly with any issues relating to crime and disorder.

### **3. Climate Change:**

3.1. How does what is being proposed impact on our carbon footprint / energy consumption? The contents of this report have no impact on carbon footprint or energy consumption

3.2. How does what is being proposed consider the need to adapt to climate change, and be resilient to its longer term impacts? Not applicable to this report.